

# Fox Hollow

5/28/01

# Springs

184-5

Location	P	Δp	Δe	e calc	emap	time	R
Esopus Creek Fox Hollow Stream	30-40	0.00	0	1010	1010'		[Went to Hochonville RR depot followed this] $\frac{2640' - 1010'}{3040' - 2870'} = \frac{1630'}{1630'} = 1.000$
Lower original trailhead	30-10	0.30	300	1310	1320'	AM 10-15	
New trailhead (MM)	30-06	0.34	340	1350	1360	1-18	
Registration booth	29-90	0.50	500	1510		↓	
Brook ford	29-78	0.62	620	1630		↑ 1:05 lunch	
Lean to (#1316 spring)	29-75	0.65	650	1660	1650	10:44	
Trail at NW head of bowl	29-60	0.80	800	1810		↓	
old ended road parallel to trail on SE curve to SE, <u>OAK</u>	29-44	0.96	960	1970		↑	
short stone wall (not asr.)	29-12	1.28	1280	2340	2160	10:55	
highest hemlocks (6" to 8")	28-90	1.50	1500	2510		↓	
Laportea springs (#1315)	28-77 (28.75?)	1.63	1630	2640	2640	11:30 12:07	

## Laportea Springs #1315

(photo #225?? in 1973)

## Spring at Lean-to #1316

Temperature 46°F (taken 2x)\*  
pH high range 4.9 (taken 2x)\*  
low range >4.5

\*Two readings:  
1st at W side of trail. 2nd about 20 horizontal feet W of trail where spring emerges from a human-lined bunch of stones

Temperature 46°F (air 57°F)  
pH 4.8

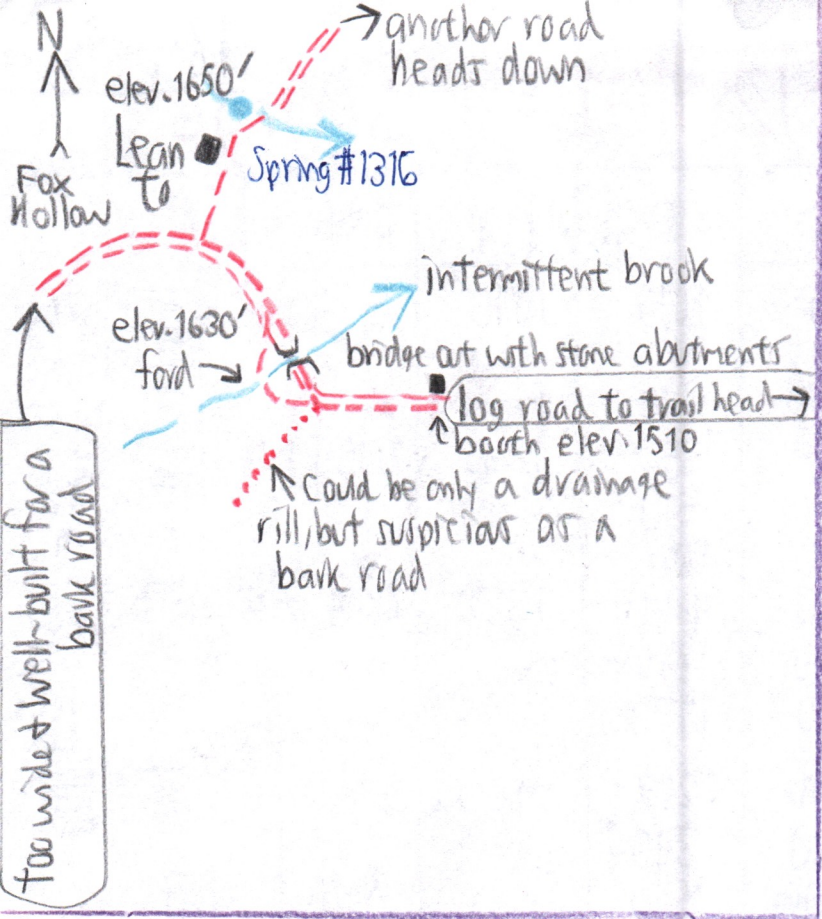
Map, over →

- Flora:
- SUG & ASH dom
  - YB
  - B
  - 1 OAK seedling
  - OST
  - BC
  - MO
  - VA, SAMB
  - LAP abun
  - CAULO
  - HYDRO
  - TIAR
  - DICENTRA
  - RABORT

- VC
- VROT
- OX, AN
- ERK
- MEDEOLA
- ARIS
- POA(?) coll.
- SMILACINA
- PA
- DP
- AFF
- abun SUB repro.

Just before reaching #1315, to the N, an ASH blocks the trail from blowdown.

- Flora:
- SUB dom & seeds.
  - ASH & seeds.
  - RM
  - OST
  - OAK nearby on trail
  - BB " " "
  - Very sparse ground cover
  - DMAR6
  - VPAP
  - PA
  - ADIV
  - POA?



David Scherf  
 met above lean to on MK ascent  
 trying to receive a  
 satellite signal for  
 his new GPS device.  
 Still there on MK descent hours  
 later waiting for a signal